

Name: _____

Date: _____

Dear Parents,

On Wednesday the 27th of May the students will write a math assessment covering the work they have done throughout Unit 9. Attached is a preparation pack to help your child prepare for the test. Work through the pack with your child and give him/her the necessary support when needed.

Regards,

The Grade 1 Team

Choose the correct sign: < ; > ; =

$1 + 5 \underline{\hspace{1cm}} 6 - 2$

$5 + 8 \underline{\hspace{1cm}} 6 - 3$

$7 - 0 \underline{\hspace{1cm}} 0 + 7$

$10 + 2 \underline{\hspace{1cm}} 8 - 6$

$13 - 3 \underline{\hspace{1cm}} 2 + 8$

$7 + 5 \underline{\hspace{1cm}} 12$

Use a drawing to help you answer these questions.

Mariam has 5 cookies. Abdulla has 9 cookies.

Who has more cookies? _____

How many more? _____



1 Chocolate bar

costs 3dhs. 1 Ice-cream



costs 5dhs.

Abdullah buys 1 chocolate bar and 2 ice-creams. How much did he pay?

4 People share 12 lollipops.



How many lollipops does each person get?

_____ lollipops

How many lollipops will 3 people get?

_____ lollipops

Maitha buys 1 milkshake  and 1 cookie. 

If a milkshake costs 5dhs and a cookie costs 3dhs, how much did she pay?

Solve:

$12 - 2 = \underline{\quad}$

$6 + 4 = \underline{\quad}$

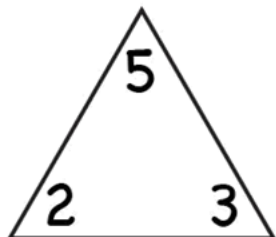
$22 - 2 = \underline{\quad}$

$60 + 40 = \underline{\quad}$

$112 - 2 = \underline{\quad}$

$600 + 400 = \underline{\quad}$

Write four different facts.

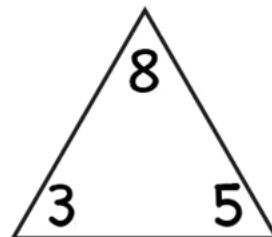


$$\square + \square = \square$$

$$\square + \square = \square$$

$$\square - \square = \square$$

$$\square - \square = \square$$

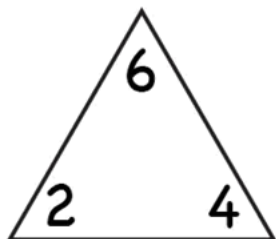


$$\square + \square = \square$$

$$\square + \square = \square$$

$$\square - \square = \square$$

$$\square - \square = \square$$

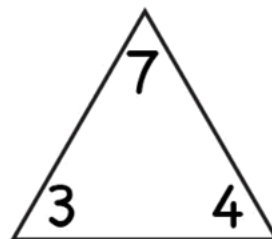


$$\square + \square = \square$$

$$\square + \square = \square$$

$$\square - \square = \square$$

$$\square - \square = \square$$



$$\square + \square = \square$$

$$\square + \square = \square$$

$$\square - \square = \square$$

$$\square - \square = \square$$

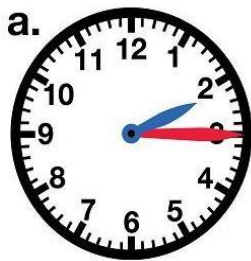
Name: _____

Time to the Quarter Hour

Telling Time

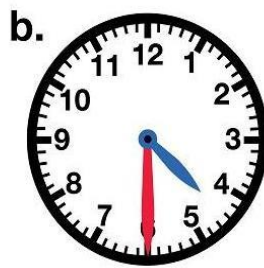
To the Nearest Quarter Hour

Write the time shown on each clock. Write it the "regular way" and the "smart way." The first one has been done for you.

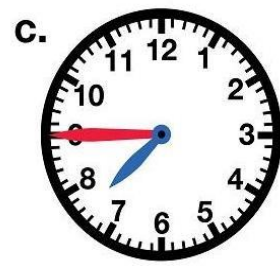


2:15

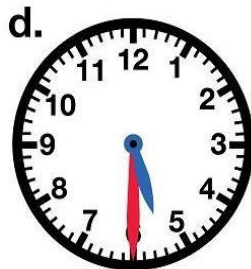
Quarter after 2



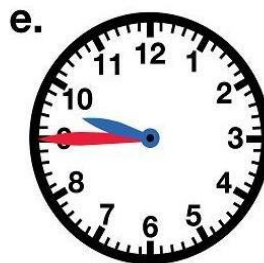
_____ : _____



_____ : _____



_____ : _____



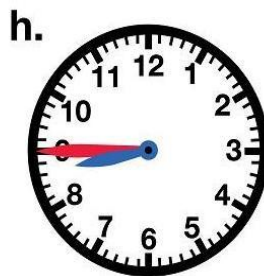
_____ : _____



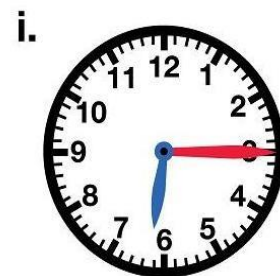
_____ : _____



_____ : _____



_____ : _____



_____ : _____

Name: _____

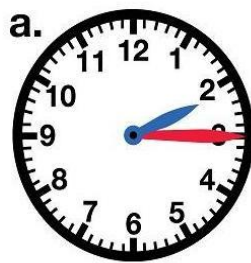
Time to the Quarter Hour

ANSWER KEY

Telling Time

To the Nearest Quarter Hour

Write the time shown on each clock. Write it the "regular way" and the "smart way." The first one has been done for you.



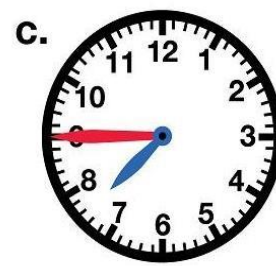
2:15

Quarter after 2



4:30

Half Past 4



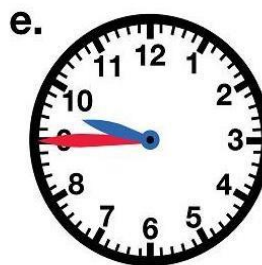
7:45

Quarter to 8



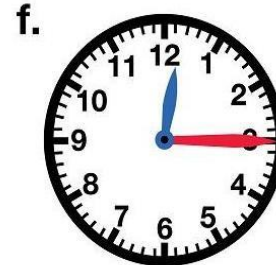
5:30

Half Past 5



9:45

Quarter to 10



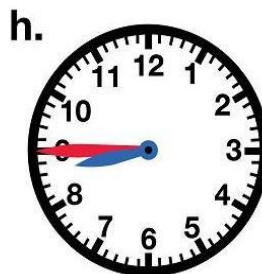
12:15

Quarter After 12



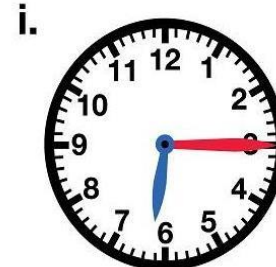
1:45

Quarter to 2



8:45

Quarter to 9



6:15

Quarter After 6

